

# SLIDING BURNER WITH SILICON CARBIDE RAD-1 SERIES

## FEATURES

- Burner body: AISI310
- Mixer body: AISI303
- Gas pipe: AISI304
- Nozzle: AISI303
- Flame shield: silicon carbide
- Suitable for different types of gas: CH<sub>4</sub>/L.P./propane/etc.
- Capacity: 15 kW
- Air and gas pressure: 75 mbar
- Wide turndown range
- Low NO<sub>x</sub> level
- Separated air and gas inlets, mixing at discharge point, no flash-back.

## APPLICATIONS

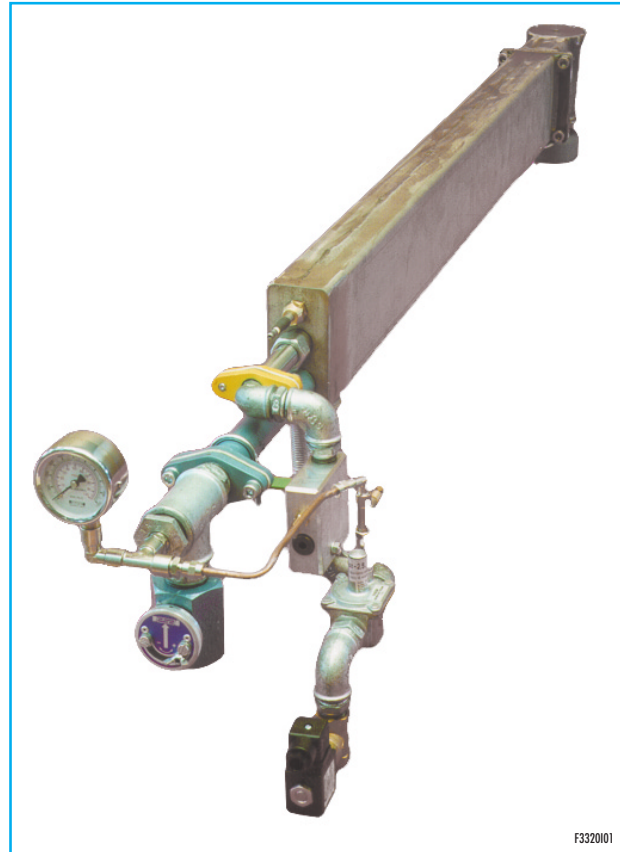
- Glass furnaces

## DESCRIPTION

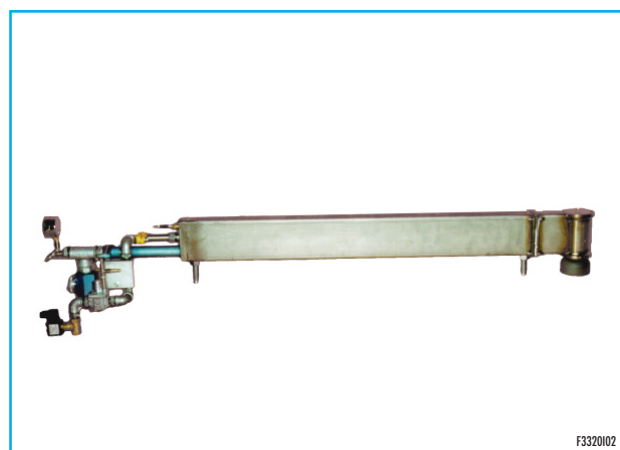
Naked flame burner model RAD-1 is suitable for bending glass furnaces. Mixer is mounted directly on nozzle in order to reduce to a minimum possible flashbacks.

## INSTALLATION

RAD-1 burner must be mounted on wall, just under the roof in order to have a flame directed down. For connection of air and gas pipes to burner, we suggest to use flexible pipes that allow burner to slide on mounting seat.



F332001



F332002

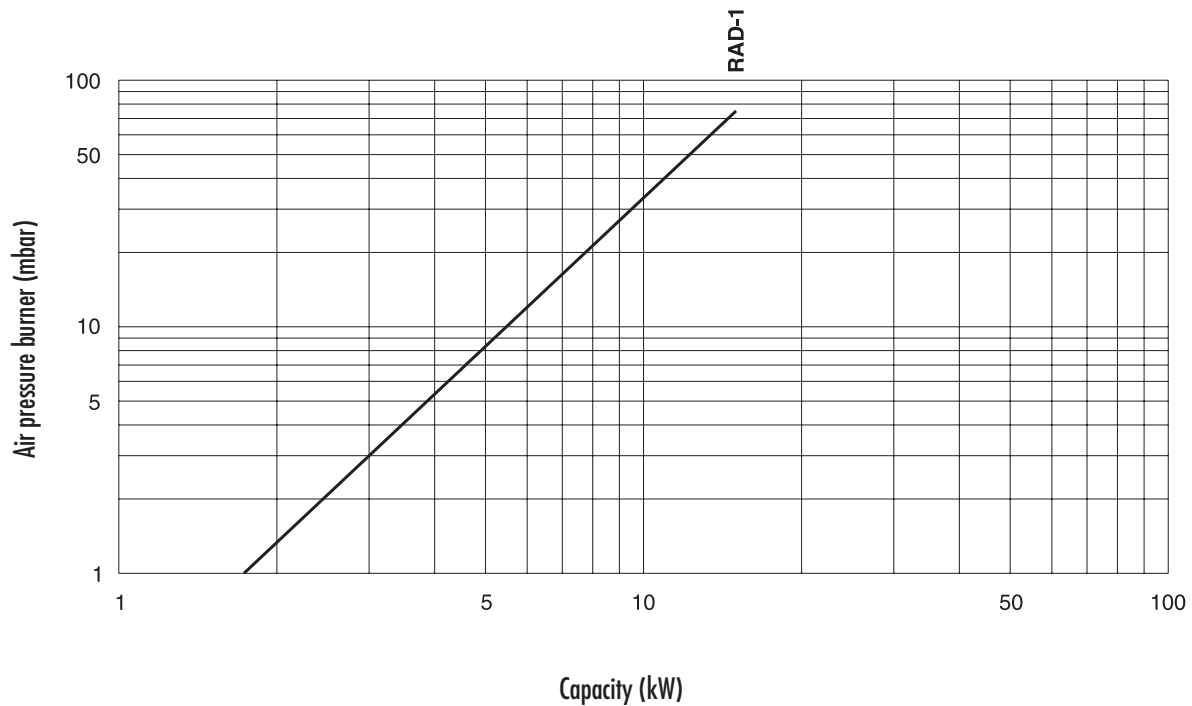
## IGNITION AND FLAME DETECTION

RAD-1 must be ignited at low fire by a Wand electrode (supplied with the burner). Flame detection is made by the same electrode; we suggest installing a flame control device ESA ESTRO and a low impedance

transformer (TAR-10). Flame detection systems are required on all burners with furnace temperatures below 750°C.

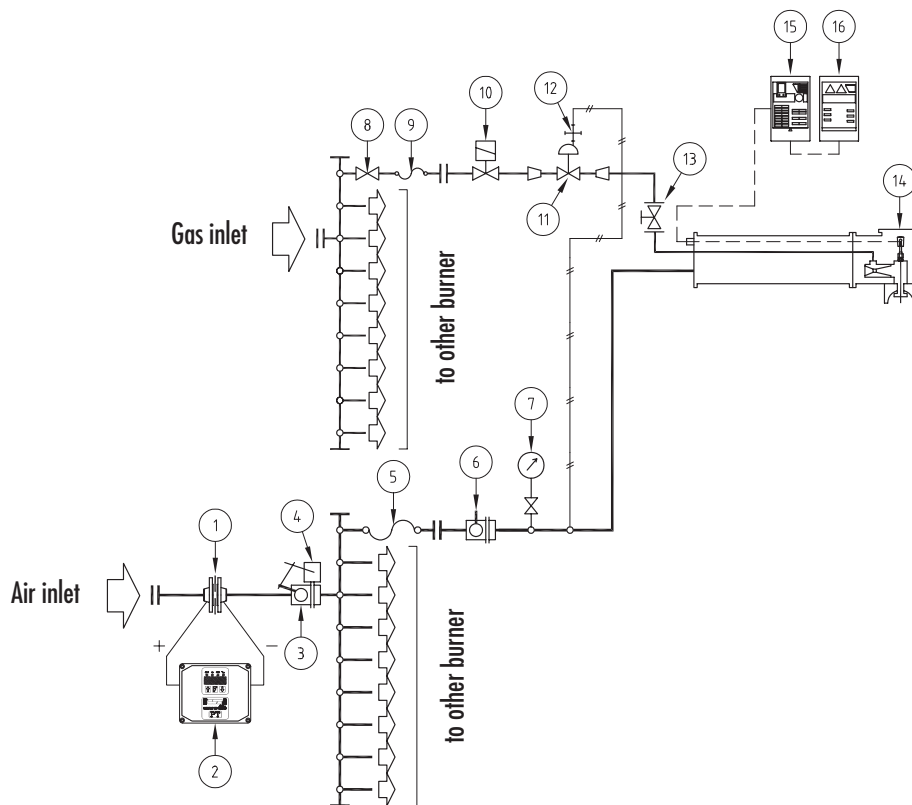
Catalog No.	Pilot burner ignition		Electrode ignition	
	Ignition	Detection	Ignition	Detection
RAD-1	(not available)	(not available)	Wand	Wand

## CAPACITY TABLE



G3320101

## FLOW CHART



Pos.	Model Identification
1	Orifice flow meter for $\Delta P$ air
2	Differential pressure transmitter
3	Motorized air valve
4	Electric control
5	Flexible pipe
6	Manual butterfly air valve
7	Pressure gauge
8	Main gas ball valve
9	Flexible pipe
10	Burner safety solenoid gas valve
11	Zero regulator
12	Impulse line
13	Gas adjuster
14	Burner
15	Flame control device
16	Box with ignition transformer

D3320102

